

**VERION®**

AGRICULTURA



SUGARCANE HARVEST MONITOR

THE ULTIMATE TOOL FOR YOUR
SUGAR CANE PRECISION
FARMING CYCLE

The weighing platform, key component of the system , is easily adaptable to most brands of sugarcane harvesters on the market.



** This computer is upgradeable to all our PF solutions*

OPERATIONAL DESCRIPTION AND FEATURES

The yield measurement system aims to register in real time the amount of cane collected in each part of the field during harvesting, generating a georeferenced variability map which can later be used to make better decisions regarding land treatment and input application.

The flow of cane harvested is weighed in motion by a platform located at the end of the cane lift conveyor, and this information is transmitted via a CAN BUS to the Vcom computer, where it is displayed on screen and also stored in the datalogging memory.

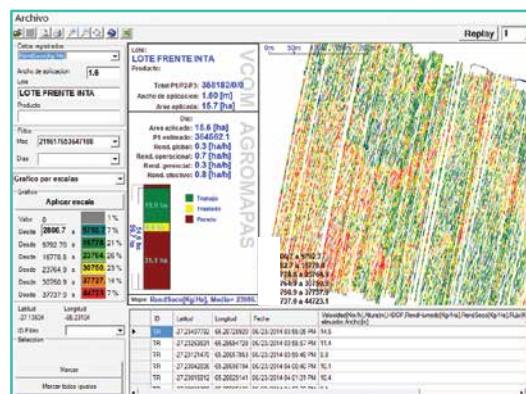




WORK LOG

The harvest system generates georeferenced maps that allow you to know in detail the work carried out by the operator. While operating, it stores such data as date, starting and finishing working times, applied dose, speed, hectares, terrain elevation, harvested area. Our Agromaps Software generates reports and post-application maps of all registered variables, which enables you to visualize and analyze all these data, hence allowing for better decision-making.

Harvest Map

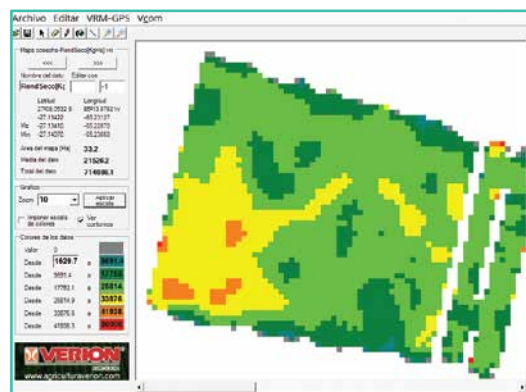


SYSTEM COMPONENTS

The system features the following components:

- 7" color screen , with SD memory for data storage.
- GPS receiver for geo positioning.
- Cane flow sensor.
- Lift conveyor RPM sensor.
- Tilt sensor for weight compensation.

Crop processing Map



GPS OPTIONS ACCORDING TO YOUR NEEDS



LCGPS: GPS/Glonass L1 10 Hz
Pass-to-pass accuracy 30 cm*
*See catalogue LCGPS



AG-STAR: GPS/Glonass L1 10 Hz
Pass-to-pass accuracy 20 cm*
*See catalogue AG-Star



SMART6-L: GPS/Glonass L1/L2 20 HZ /
Terrastar-c option.
Pass-to-pass accuracy 3-5 cm*
*See catalogue SMART 6-L

Maps can also be exported in KML format
for Google earth.



ARGENTINA

Intendente Campos 1617/23, San Martín - Buenos Aires
Rotary lines: (+5411) 4724-1300 ext. 172
agricultura@verion.com.ar | www.agriculturaverion.com.ar

COLOMBIA

Trv. 93 # 53-32 Bg. 17 Parque Empresarial El Dorado
Tel: +57 (1) 467-2473/2533/2540
ventas@agriculturaverion.com.co | www.agriculturaverion.com.co